

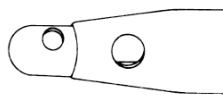
## Reusable SAFE-LOCK I/A Coaxial System



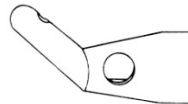
### Product Features:

- Ergonomic disassembling handpiece for easy and thorough cleaning
- Universal connector allows you to adapt to your existing Phaco or I/A system
- Tips manufactured with high-precision are designed to keep up with your changing intraoperative needs, from the capsulorhexis to cortical clean-up, to the most difficult 12 o'clock cortex removal
- Luer adapter allows you to use your existing cannulas
- Tips have a 16GA (1.60 mm O.D.) outer sleeve with dual 0.90 mm irrigating side ports and 21GA (0.8 mm O.D.) inner cannula with 0.35 mm aspirating port. Other sizes available upon request.
- Swiss design / Swiss Made

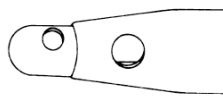
Some product forms of the SL-family



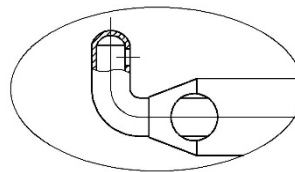
**SL 110**  
Straight Tip for standard aspiration procedures with 0.35 mm aspirating port



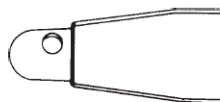
**SL 120**  
Angled 45° Tip for peripheral cortex removal



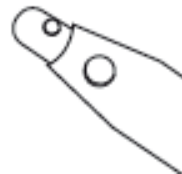
**SL 115**  
Straight Tip for removal of viscoelastic fluids with 0.50 mm aspirating port



**SL 130**  
Angled 90° Tip for peripheral and superior cortex removal

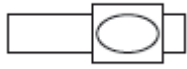


**SL 116**  
SI-Sleeve Tip straight, without soft style Si-sleeve

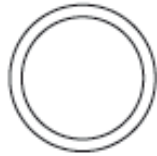


**SL 140**  
Curved Tip for initial cortex Removal

./.



**SL 180**  
Adapter Tip blocks aspiration and accommodates all irrigation cannulas



**SL 195**  
O-Ring Set replacement set (pack of 15 pieces)

**WARNING:**  
Replace O-rings after every 20<sup>th</sup> resterilisation



**SL 100 I/A**  
Handpiece ergonomic handle

### Entire List of SL-family

SL 100	I/A Handpiece disassembling; coaxial / monomanual	SL 119 a11	Angl 30°Si-Sleeve Tip 22G, AspPort 0.30mm D 0.7mm
SL 110	Straight Tip for standard aspiration; 16G, Asp. 0.35mm, D 1.6mm	SL 119 a12	Angl 30°Si-Sleeve Tip 21G AspPort 0.30mm D 0.80mm
SL 110/0.3	Straight Tip 16G for standard aspiration; 16G, Asp. 0.30mm, D 1.6mm	SL 119 a13	Angl 30°Si-Sleeve Tip 20G AspPort 0.30mm D 0.90mm
SL 115	Straight Tip 16G for removal of viscoelastic fluid; Asp.port 0.50mm	SL 119 a14	Angl 30°Si-Sleeve Tip AspPort 0.30mm D 1.0mm
SL 116	Straight Si-Sleeve Tip; 21G, Asp. 0.35	SL 119 a21	Angl 45°Si-Sleeve Tip 22G, AspPort 0.30mm D 0.7mm
SL 116 s1	Straight Si-Sleeve Tip 22G AspPort 0.30mm D 0.70mm	SL 119 a22	Angl 45°Si-Sleeve Tip 21G AspPort 0.30mm D 0.80mm
SL 116 s2	Straight Si-Sleeve Tip 21G AspPort 0.30mm D 0.80mm	SL 119 a23	Angl 45°Si-Sleeve Tip 20G AspPort 0.30mm D 0.90mm
SL 116 s3	Straight Si-Sleeve Tip 20G AspPort 0.30mm D 0.90mm	SL 119 a24	Angl 45°Si-Sleeve Tip AspPort 0.30mm D 1.0mm
SL 116 s4	Straight Si-Sleeve / 0.3 D1.0 straight	SL 120 30°	Tip 30° 16G angled, Asp. port 0.30 mm; for peripheral cortex removal
SL 117	Straight Si-Sleeve Tip 20G	SL 120 45°	Tip 45° 16G for peripheral cortex removal
SL 118 c1	Curved Si-Sleeve Tip 22G AspPort 0.30mm D 0.70mm	SL 130	Tip 90° 16G for peripheral & superior cortex remov
SL 118 c2	Curved Si-Sleeve Tip 21G AspPort 0.30mm D 0.80mm	SL 140	Curved Tip 16G (inn21G) for initial cortex removal
SL 118 c3	Curved Si-Sleeve Tip 20G AspPort 0.30mm D 0.90mm	SL 190	Silicon Sleeve
SL 118 c4	Curved Si-Sleeve Tip, AspPort 0.30mm D 1.0mm	SL 195	O-ring set
SL 119	Angled Si-Sleeve Tip 45°		

Version 06/2015

About Bürki  
Bürki plans, develops, produces and certifies microsurgical instruments in SWISS QUALITY DIN EN ISO 13485

Bürki inno med AG  
Industriestrasse 67  
9443 Widnau  
Switzerland

Tel +41 (0)71 744 88 66  
Fax +41 (0)71 744 88 67  
info@buerki.eu  
www.buerki.eu